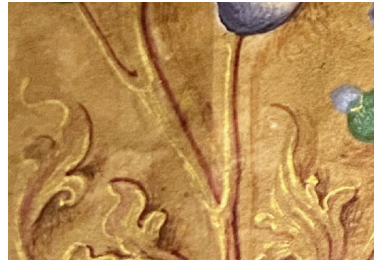




Many of the drawings in this exhibition would have been made with a goose feather pen. *Ask the Visitor Assistant to show you one.*

Find a precious book from the 1500s, can you guess what luxurious material the artist has used?



*Architects use a variety of viewpoints to show their ideas for new buildings.*

**Elevation** A view of one side of a building.

**Plan** A view from above.

**Section** A slice through a building.

**View** A building in a real setting.

### BINGO

Using the captions to help you, find one drawing made from each different viewpoint, shout bingo when you get them all!

Today architects still create designs for buildings by drawing.

### Drawing Activities

When you leave the exhibition you could:

- Visit nearby Lincoln's Inn fields and sketch what you see, the buildings and park.
- Create an impression using quick pencil marks and shading.
- Work up your sketch into a finished drawing when you get home, using pencil colours or paint.

## For Families

### Welcome to the exhibition

*This trail is aimed at children aged 3yrs+*

This museum was the home of architect Sir John Soane. During his lifetime Soane collected an astonishing amount of art filling not one, not two, but three houses with:

6,000  
Objects



7,000  
Books



30,000  
Drawings

Explore the exhibition to discover some of the most beautiful drawings from his collection that are not normally on display.

Sir John Soane lived in this house nearly 200 years ago!



*Drawing is...*



SIR JOHN  
SOANE'S  
MUSEUM  
LONDON

Designing

Scribbling



Disegno is an Italian word from the 14th-Century that means to draw ideas!

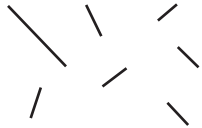
Creating patterns



Looking

Telling stories

Making marks

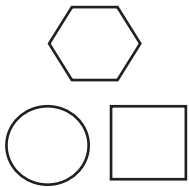


Copying

Sketching



Forming shapes



Explore the exhibition to discover the hidden drawing masterpieces from Sir John Soane's collection.

**Look** carefully at the marks, colours, shapes, patterns and lines in the drawings. What is being shown and why?

**Think** about how each drawing makes you feel. What building would you draw if you could?

**Find** out what different materials have been used and what effect they have? For example does it help the drawing to be more realistic?

Stand with your back to a drawing and close your eyes. Ask your adult to describe the story it tells and whilst they do try to imagine what it looks like.

Open your eyes, did it look how you thought it would?

Now move on to another drawing and swap with your adult, try to describe it to them in as much detail as you can.

Look at the drawing titled *Temple of Neptune, Paestum*.

Can you find the vanishing point using the diagram above to help you?

This technique is called linear perspective and it allows artists to create a sense of 3D space on the flat surface of the paper.

John Soane was discovered to be an excellent draughtsman at the age of 15. This meant he had a talent for drawing.