



SIR JOHN
SOANE'S
MUSEUM
LONDON

Private Tours



An Extraordinary House Museum

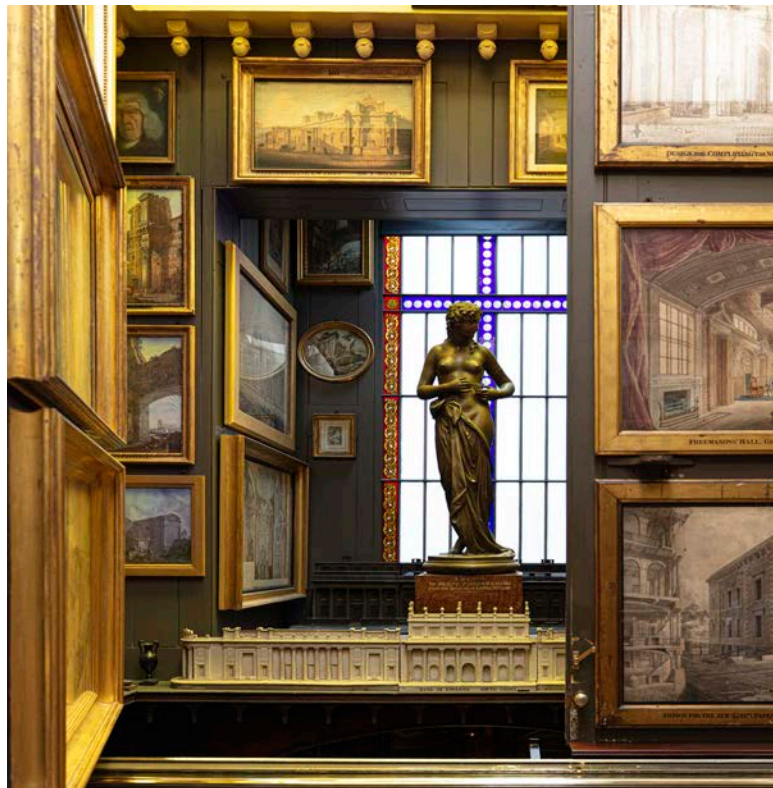
The Museum was designed and curated by Sir John Soane (1753-1837), one of Britain's greatest architects. Known for its whimsical and personal interiors, every aspect of the Museum reflects Soane's architectural ingenuity, imagination, innovation, and artistic taste.

Soane's collections are still arranged today as they were at the time of his death in 1837, as decreed by an Act of Parliament. From the moment guests step through the door, they are transported back in time to the Regency era.

In order to understand the complexity and ingenuity of the Museum, we invite you to take a private tour where our expert guides, with their passion and flair, will be the perfect people to enlighten you about this exquisitely unique historic house.

"Our tour guide was fabulous - bringing the Museum to life and engaging all three generations. Plenty of facts and immense knowledge but delivered in a personable way with a good dose of humour!"

- Guest





Daytime Tours

Daytime Museum Tour

£250+VAT | Capacity: 15 | 60 minutes
10am-4pm Wednesday-Sunday

Our standard tour across the Museum's ground floor and first floor drawing rooms. Includes the Picture Room, with paintings by Canaletto and Turner and the complete series of William Hogarth's *An Election* paintings.

Why not add?

Private Apartments Tour,
Drawing Office Tour, or a Visit
to the Library and Archives
+£100+VAT | Capacity: 6-8 | 30 minutes

*"We were all captivated by the objects
and art, and the stories wonderfully
told by our two guides."*

- Guest



Behind the Scenes Tours

Private Apartments Tour

£200+VAT | Capacity: 8 | 45 minutes
10am-4pm Tuesday-Sunday

Exclusive access to Soane's domestic spaces and architectural model room, which were opened in 2015 after an extensive restoration project.

Drawing Office Tour

£200+VAT | Capacity: 6 | 45 minutes
10am-4pm Tuesday-Sunday

Exclusive access to Soane's architectural studio, which opened in 2023 after a unique restoration project.


Conservation Tour

£500+VAT | Capacity: 6 | 60 minutes
10am-4pm Wednesday and Sunday

Exclusive access to the recently restored Private Apartments or the Drawing Office followed by a behind the scenes tour of the Museum's custom built conservation studio.

"What a joy to see the studio where Soane worked and have it brought to life by our exceptional guide!"

- Guest



"How wonderful it was to see the Museum early before public hours, and have the opportunity to tour every nook and cranny with two excellent guides."

- Guest

Out of Hours Tours

Exclusive Access Tour

£400+VAT | Capacity: 15 | 60 minutes
9am-4pm on Tuesdays

Exclusive access for your group at a time when the Museum is closed to the public. Have the Museum all to yourselves and experience the wonders of Sir John Soane's extraordinary collection as our expert guides take you through the interiors with private access.

Pre-Opening Tour

£500+VAT | Capacity: 15 | 60 minutes
9am-10am Tuesday-Sunday

Exclusive morning access for your party before the Museum opens to the public. For an additional £7.50+VAT per person, enjoy coffee, tea, and pastries in the Library-Dining Room, where Soane would have entertained his esteemed guests.

Why not add?

Private Apartments Tour,
Drawing Office Tour, or a Visit
to the Library and Archives
+£100+VAT | Capacity: 6-8 | 30 minutes

Candlelit Tours

Explore the Museum's marvellous collections and preserved interiors at their most atmospheric as our expert guides bring the history of the building to life through an intimate one-hour tour by candlelight.

Guests are welcomed with a half-hour prosecco and white wine reception in the Library-Dining Room, before embarking on our traditional tour. Guests arrive from 6:00pm and depart at 7:30pm. Charged at £1500+VAT for up to 15 people with additional guests charged at £70+VAT per person for up to 30 people. Candlelit Tours are available every day except for Mondays.

Why not add?

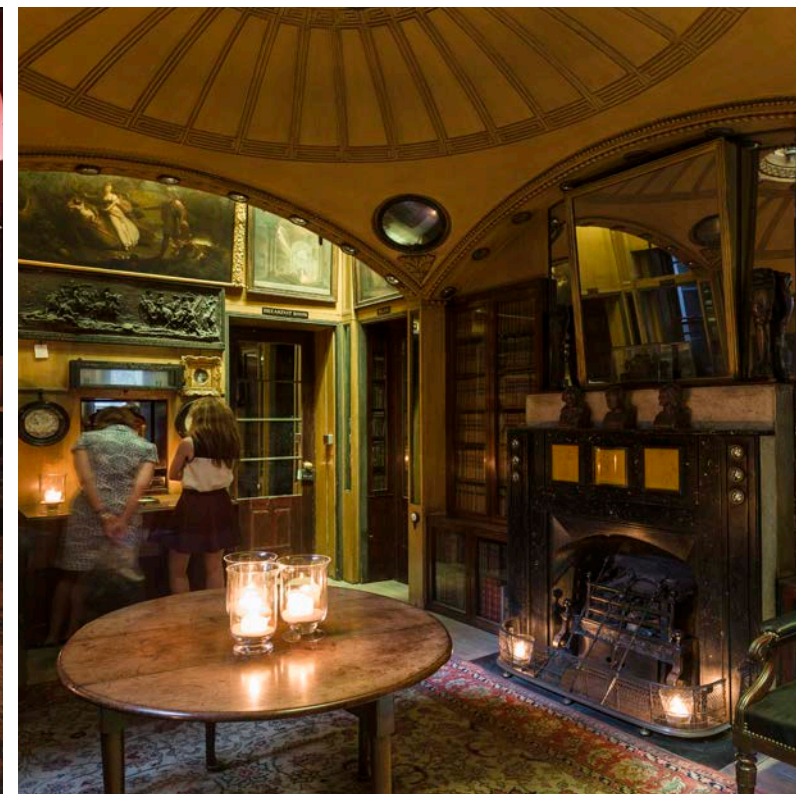
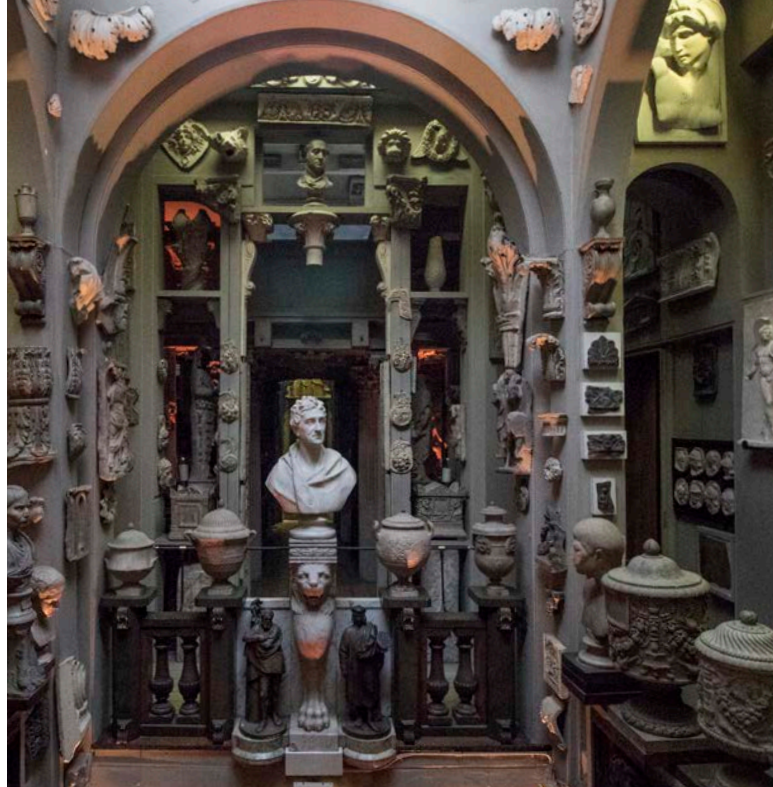
Ruinart Champagne

+£500+VAT for up to 15 people with additional guests charged at £80+VAT per person.

Enjoy Soane's favourite champagne.

Canapés

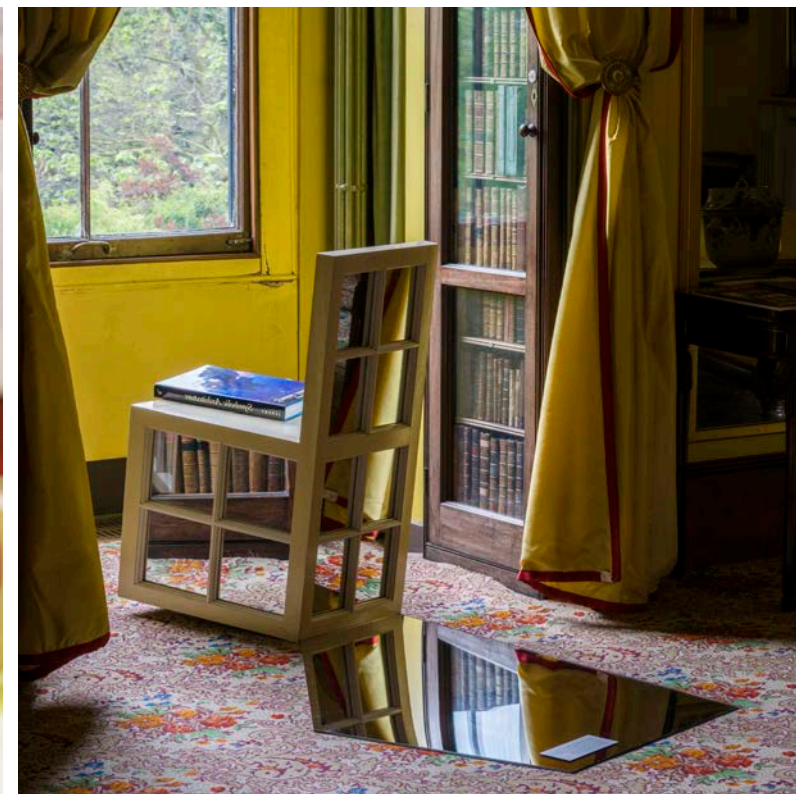
+£1000+VAT for up to 15 people with additional guests charged at £30+VAT per person.



Exhibition Tours

£350+VAT | Capacity: 15 | 60 minutes
10am-4pm Tuesday-Sunday

Experience the Museum's current temporary exhibition with a comprehensive tour delivered by one of our Senior Curators. The Exhibitions Programme explores the Museum's themes and collections in both historic and contemporary contexts. Find out about current and upcoming exhibitions on [our website](#).





Gift a Tour

Share the wonder of the Museum and gift a private tour to someone special. All of our tours can be gifted. All of our tours that are presented as a gift come with a complimentary *A Complete Description*. This publication serves as an essential companion for anyone wishing to explore the Museum, providing an insightful summary for both the casual visitor and the scholarly researcher alike.

FAQs

When and where should I arrive?

Guests should arrive to No.12 Lincoln's Inn Fields 10 minutes prior to the tour start time.

What restrictions should I know about?

We ask that guests do not eat inside the building, do not wear stiletto heels, and leave all bags in our secure cloakroom. We do not have the facilities to store large bags or suitcases.

What if my group is larger than the capacity listed?

We can offer two tours simultaneously if the number of guests exceeds the capacity limit.

Can my tour be tailored to suit my interests?

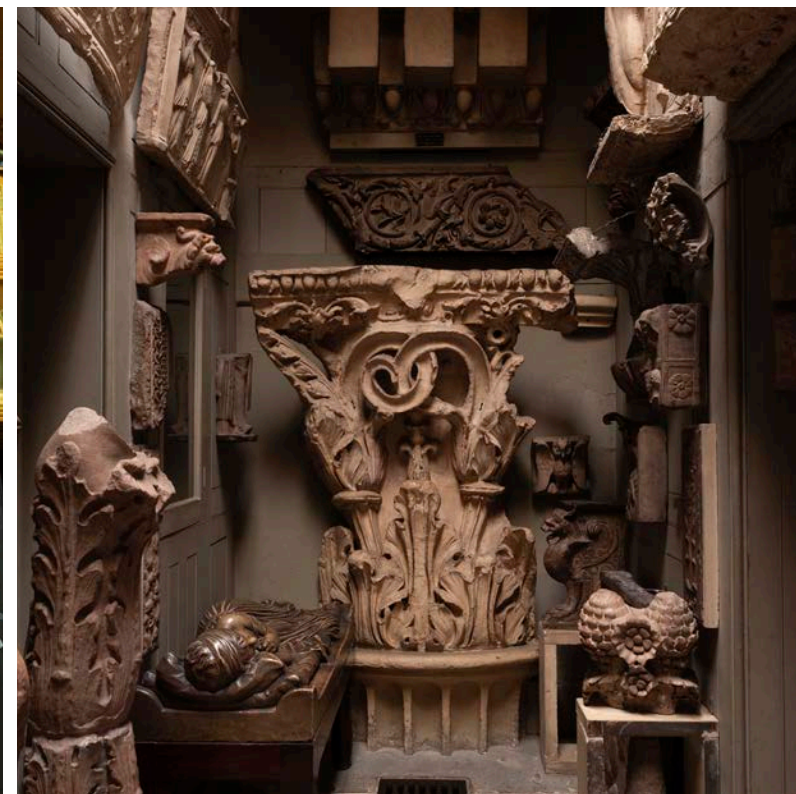
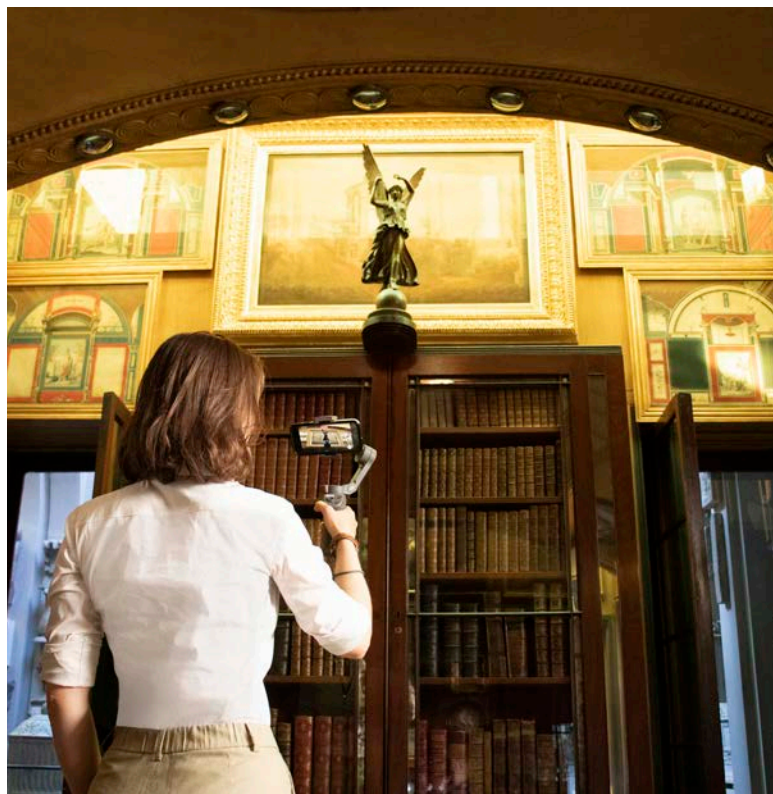
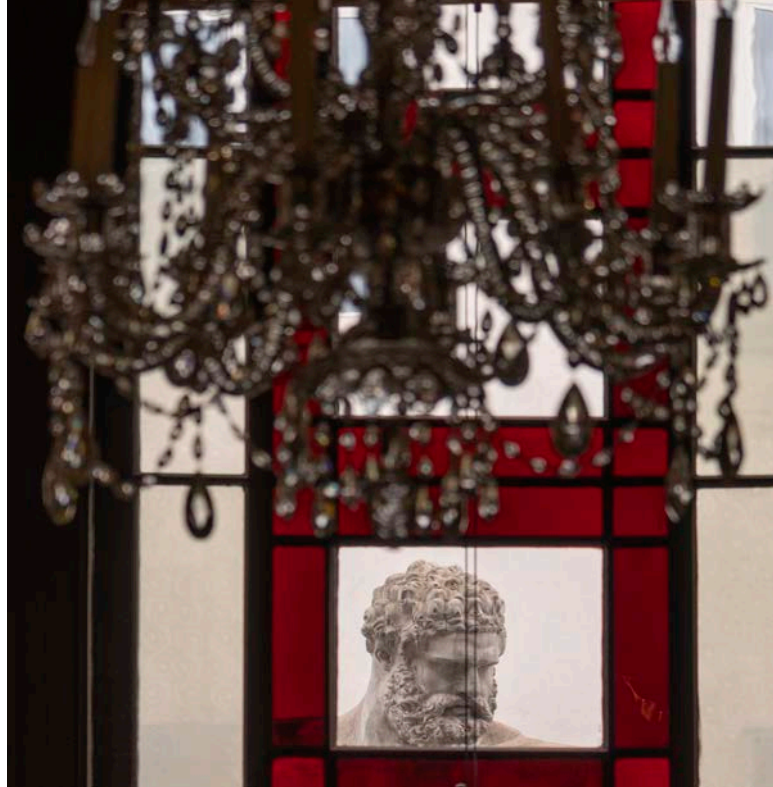
We can offer specialist tours on various topics. Let us know if you want to personalise your tour and we'll do our best to accommodate your request.

Do you offer digital tours?

All tours are available digitally, either via live-streamed Zoom tour or via the Highlights film, available to purchase through our website.

Do you offer tours in other languages?

We currently offer tours in a range of languages. Please get in touch for more information.



Contact Us

We are conveniently situated in the historic Lincoln's Inn Fields, London's largest public square in the heart of the city - a short walking distance from Holborn, Chancery Lane, and Temple tube stations.

In addition to our standard tours, we can also arrange dinners, drinks receptions, recitals, presentations, board meetings, away-days, and product launches upon request.

Please get in touch for further information about tours and events at the Museum or if you have any questions.

Image credits: Lewis Bush, Antoine Bonin, Nathan Emery, Gareth Gardner, Derry Moore, Alexander Newton, Celia Rogge, and Tom Ryley.

Images reproduced by kind permission of the Trustees of Sir John Soane's Museum, London. All rights reserved.

Sir John Soane's Museum
13 Lincoln's Inn Fields
London WC2A 3BP

Email: events@soane.org.uk
Tel: +44 (0)20 7440 4279



