



SIR JOHN  
SOANE'S  
MUSEUM  
LONDON

---

## Filming and Photography

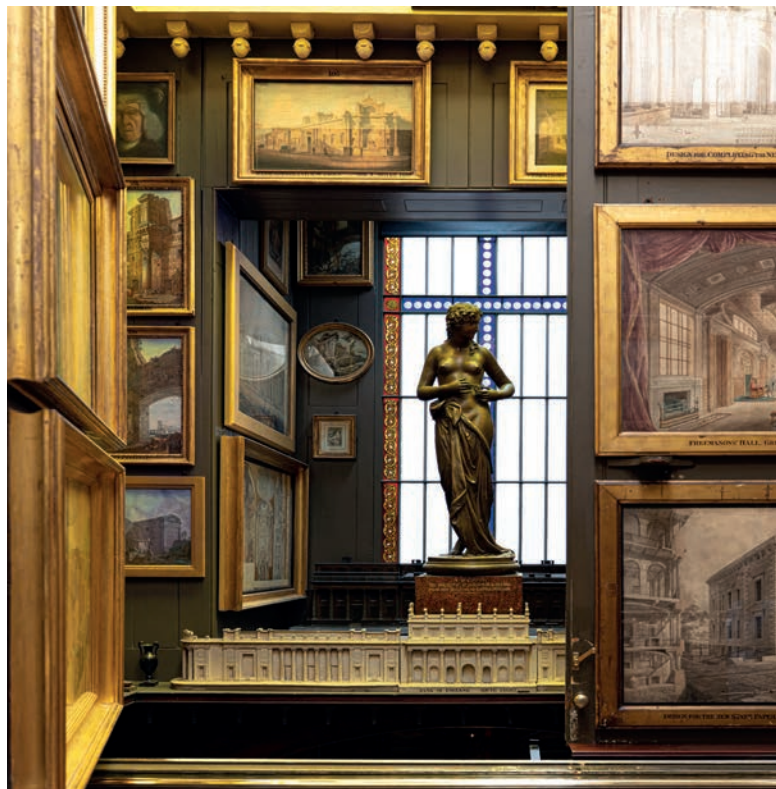




# An Extraordinary House Museum

The Museum was designed and curated by Sir John Soane (1753-1837), one of Britain's greatest architects. Known for its whimsical and personal interiors, every aspect of the Museum reflects Soane's architectural ingenuity, imagination, innovation, and artistic taste.

Soane's collections – Greco-Roman marbles, architectural fragments, plaster casts, paintings, sculptures, and priceless furniture – are still arranged today as they were at the time of his death in 1837, as decreed by an Act of Parliament.



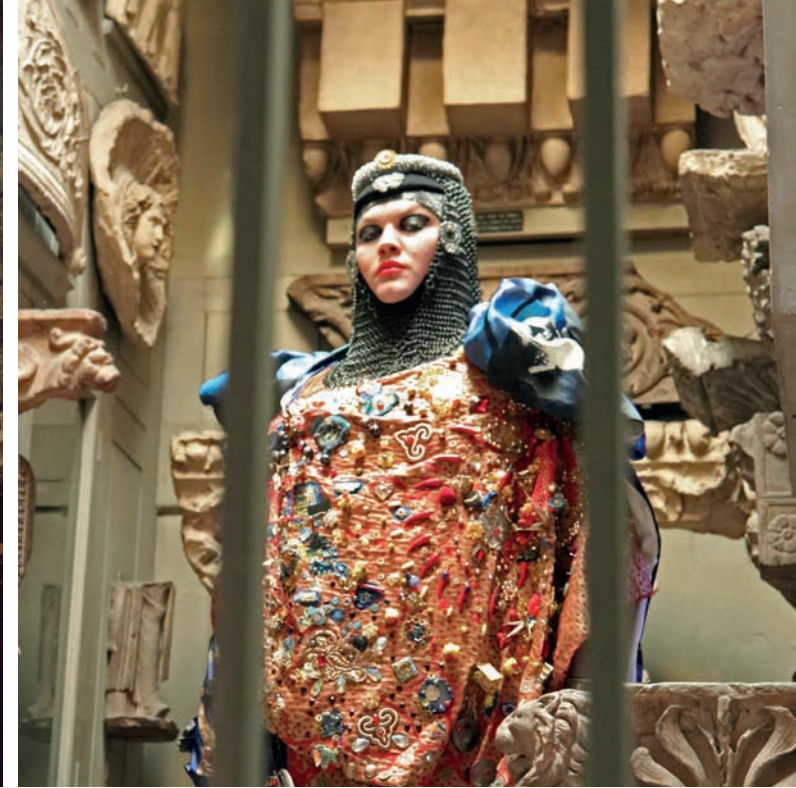


# Shooting at the Museum

With its distinctive spaces, eclectic collections, and rich history, the Museum is the perfect setting for fashion shoots, architectural photography, documentary productions, and much more.

We strive to be a photography- and film-friendly environment and will help and guide you through every stage of the process, from arranging a site visit to managing your shoot.

Previous clients include Cereal Magazine, Channel 4, Grazia, Harvey Nichols, Manolo Blahnik, Paramount Pictures, and Sky Arts.





# The Library- Dining Room

Capacity: 8

This lavish room, the largest in the Musuem, was used by Sir John Soane to entertain guests and potential clients. The walls are vibrantly painted in Pompeian red, likely inspired by a fragment of red wall plaster Soane pocketed from the ruins of Pompeii. The numerous mirrors ingeniously placed by Soane behind works of art, around paintings and in and above bookcases create a variety of effects that convey the illusion of spaces beyond this one.

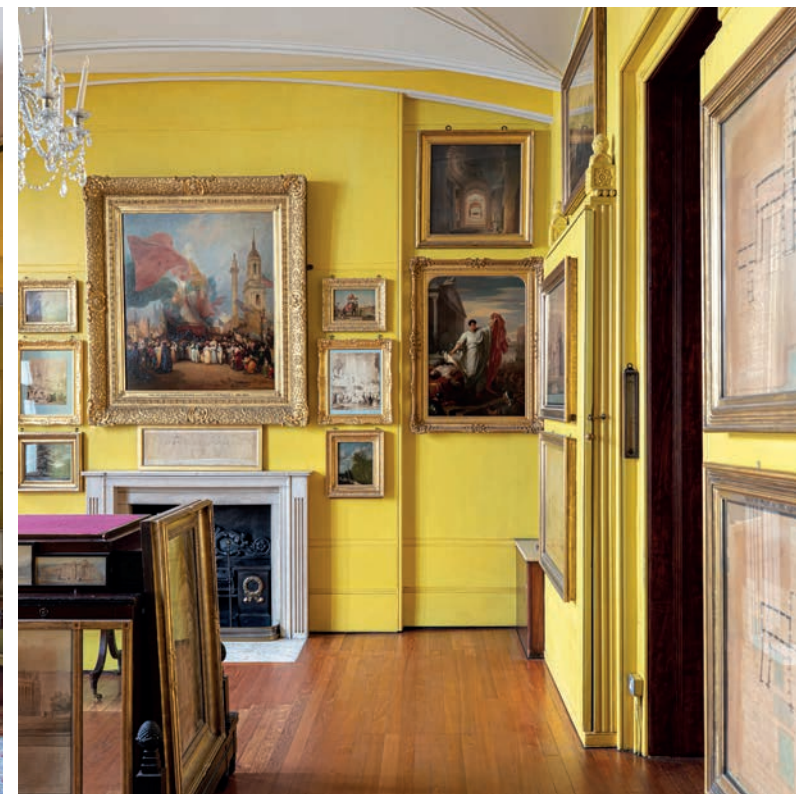




# The North and South Drawing Rooms

Capacity: 8

With their walls painted in 'Turner's patent yellow', the Drawing Rooms are wonderfully bright and cheerful spaces. A perfect example of Regency era Drawing Rooms, they were used for entertaining by Soane's wife Eliza during the two years that she lived here. She noted playfully in her diary for one evening 'Mr Soane out of town... had a dance'.

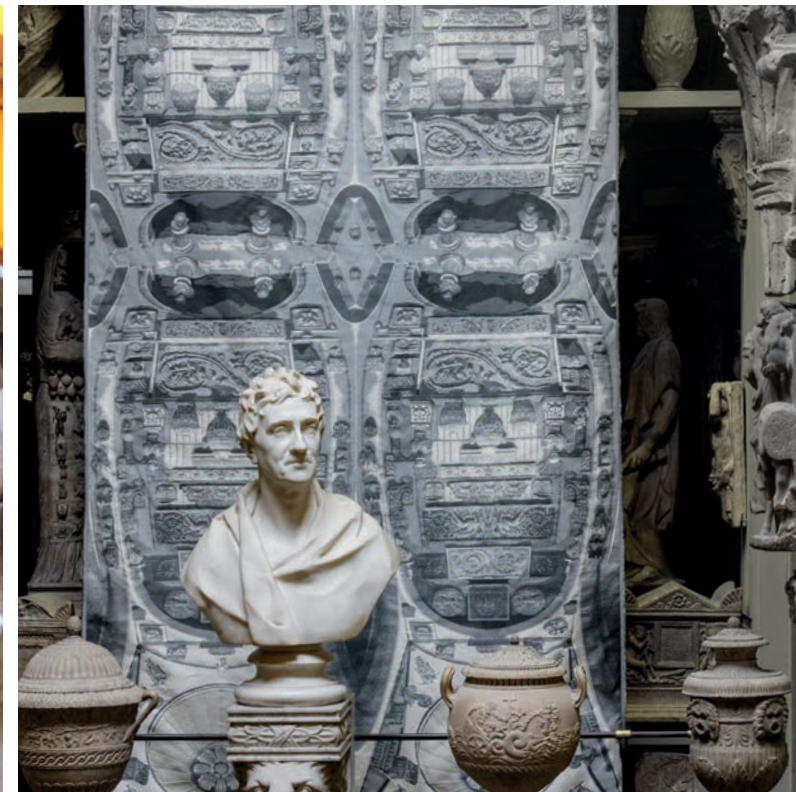




# The Dome Area

Capacity: 6

With its arrangements of classical fragments, cinerary vases, casts, and skylights filled with yellow glass, this light-filled, double-height space is perhaps the most iconic location in the Museum. It was designed to evoke the ruins of ancient Rome and houses a full-size cast of the famous Roman statue known as the Apollo Belvedere.

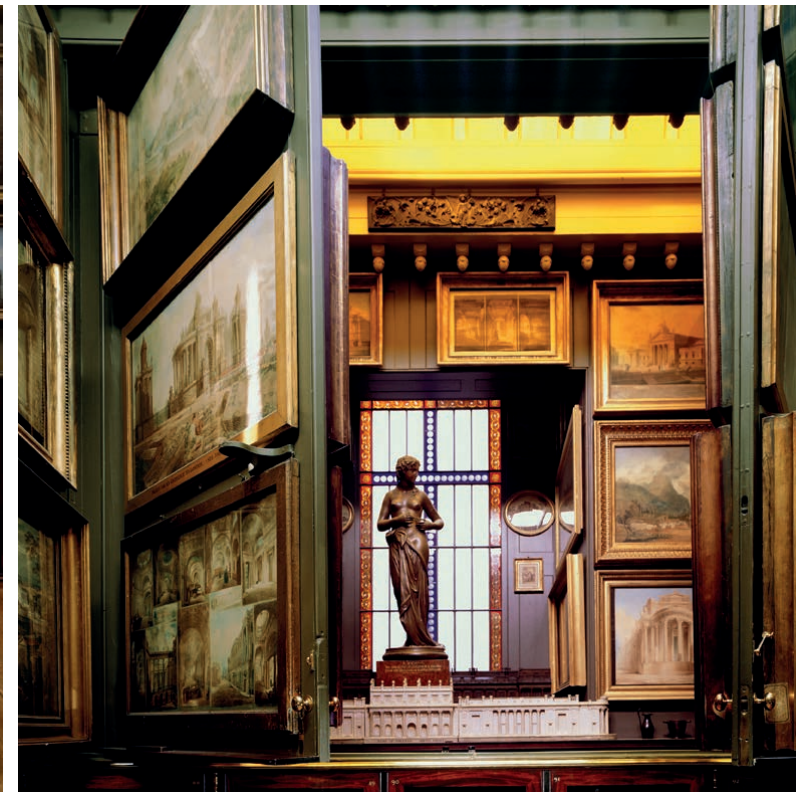




# The Picture Room

Capacity: 6

Works by Canaletto, Hogarth, and Turner adorn the walls of this impressive room. Soane innovatively designed large timber hinged 'movable planes' that can open up, so that the room could house three times as many pictures as would normally fit into a space this size.





# The No. 13 Breakfast Room

Capacity: 6

This magnificent room was described by Soane as 'a succession of those fanciful effects which constitute the poetry of architecture'. These 'effects' are created by the shallow dome, the coloured light from the concealed skylights, and the use of more than one hundred mirrors.





# The Drawing Office and the Private Apartments

Capacity: 2

Recently reopened after a unique restoration project, the Drawing Office was Soane's architectural studio and is the oldest surviving example of its kind. Here, amongst architectural casts, models, and fragments, Soane's draughtsmen and pupils worked on his architectural projects, inspired by his extensive collection.

The Private Apartments feature Soane's domestic spaces, including Mrs Soane's elegant Morning Room, the impressive Model Room, and Soane's bedroom.





# The Kitchens and the Basement

Capacity: 8

The Kitchens were once the bustling domain of Soane's servants. With their cream palette and simple wooden furniture, they are a more neutral space than that offered by other rooms in the Museum.

The Basement is an atmospheric homage to the burial chambers of ancient Rome. This area comprises a series of rooms lit by light from skylights that filters down through apertures in the floor above and include the Crypt, the Monk's Parlour, the Selpulchral Chamber, and the Catacombs.

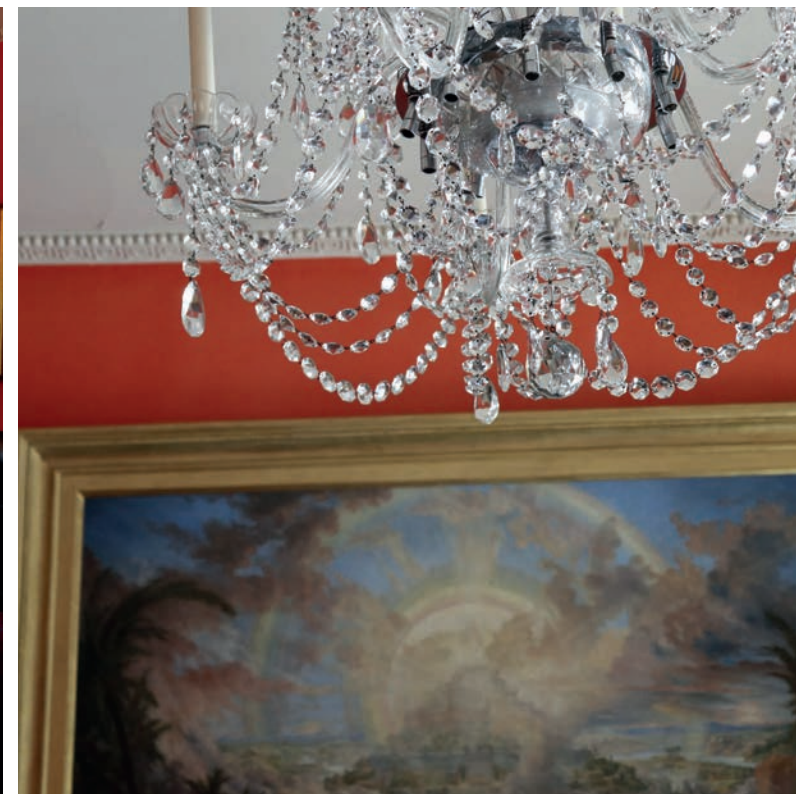




# The Seminar Room

Capacity: 8

Our most versatile space, the Seminar Room can be used as a shooting space or a green room. The room is flooded with natural light with large windows looking out to the green space of Lincoln's Inn Fields.





# Other Spaces

There are a number of corridors, landings, and staircases within the labyrinthine Museum which can be used for shooting. These liminal spaces are best surveyed through a site visit.





# FAQs

How much does hire cost?

Cost is dependent on crew size, spaces in use, and image use. Please complete and return an Application Form in order for us to provide a quote.

When are the spaces available?

For the majority of our spaces, shoots must take place when the Museum is closed to the public: 8am-6pm on a Tuesday and before 9am and after 5pm Wednesday-Sunday. Shoots can take place in the Private Apartments and the Seminar Room Monday-Sunday, subject to availability.

Is there a green room?

The Seminar Room can be used as a green room and we offer water, tea, and coffee for £3.50 per person.

Can I have a crew larger than 8?

Crew size is limited in the Museum spaces, but members can be swapped from outside the Museum or from the green room.

Are there toilets on-site?

There are toilets on-site.

Where can I park, load, and unload?

Crews can park, load, and unload on the street directly outside the Museum.





# Rules and Restrictions

During filming and photography hires, the greatest care must be taken not to damage any surfaces or objects in the Museum.

Key rules and restrictions to be aware of:

All aspects of the project must be discussed in detail in the planning stages. Museum staff reserve the right to refuse any aspect of the project that has not been previously agreed during the planning stage.

All activity will take place under the supervision of Museum staff.

All clients need to supply an up-to-date public liability insurance to cover up to £5 million for filming and photography shoots.

The use of flash light is not permitted.

Only cold lights may be used.

Tripods must have rubber or tennis-ball feet.

No makeup may be applied outside the Seminar Room.

No hairspray may be applied in the Museum.

A full list of our Terms and Conditions is available upon request.





# Contact Us

If you are interested in shooting in the Museum, please complete and return an Application Form and/or contact us via email or phone. We can then arrange a site visit and answer any questions.

We are conveniently situated in the historic Lincoln's Inn Fields, London's largest public square in the heart of the city - a short walking distance from Holborn, Chancery Lane, and Temple tube stations.

Image credits: Elena Bazu, Antoine Bonin, Cereal Magazine, Martin Charles, Matt Clayton, Harriet Crisp, Nathan Emery, Gainsborough, Gareth Gardner, Grazia, Harvey Nichols, Molly Magrath, Manolo Blahnik, Derry Moore, Celia Rogge, Tom Ryley, John Stead, and Matt Tidby.

Images reproduced by kind permission of the Trustees of Sir John Soane's Museum, London. All rights reserved.

Sir John Soane's Museum  
13 Lincoln's Inn Fields  
London WC2A 3BP

Email: [events@soane.org.uk](mailto:events@soane.org.uk)  
Tel: +44 (0)20 7440 4279





