

Press Release / 30.01.17

New digital resource puts Sir John Soane's Museum at the fingertips

Users around the world are invited to share their experience using #ExploreSoane



3D scan of the Soane's Sarcophagus and the Sepulchral Chamber from Explore Soane

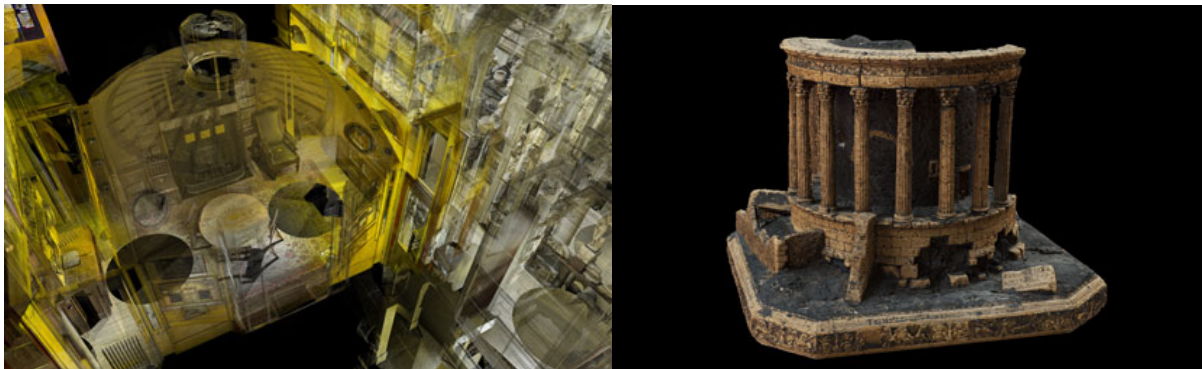
Sir John Soane's Museum, one of London's most unusual museums, is now more accessible than ever before thanks to a new digital resource which allows people from around the world to visit the Museum from the comfort of their own home.

The Soane, in partnership with UK-based creative studio ScanLAB Projects, have used the latest in 3D scanning technology to create a perfect online digital replica of the Museum. Through a newly-launched website – explore.soane.org - visitors can now virtually discover key rooms from the Museum, and learn more about a number of objects from the collection.

Currently two rooms can be discovered in detail on Explore Soane: the Model Room, which houses Soane's collection of architectural models of ancient and contemporary buildings; and the Sepulchral Chamber, the centrepiece of which is a 3,500 year old sarcophagus of Egyptian King Seti I. The latest web technologies have been used to allow users to interact with these rooms in 3D, selecting objects for a closer inspection – such as cork and plaster models of the Temple of Vesta in Italy – which can be explored from all angles in unprecedented levels of detail.

Explore Soane, funded by National Lottery players through the Heritage Lottery Fund (HLF), builds upon the ethos and values of the Museum's founder, who wanted his house and collection to inspire creativity and curiosity. This is now possible without having to physically visit the Museum. Visitors to the site are encouraged to download the 3D Models and hi-res images of objects, for their personal use - whether for academic research or to create their own artworks.

Sir John Soane's Museum was built by distinguished 19th century architect Sir John Soane, it was a home, library and museum in one – housing his collection of artworks, sculptures, furniture and artefacts. At his death in 1837, Soane left his house and collection to the British nation, stipulating that it should be kept open and free for the public's inspiration and education, and preserved exactly as he had arranged it. Explore Soane continues this ambition in a powerful new way.



Left: Explore Soane involves a 'fly-through' of the Museum's rooms. Right: 3D scan of the Soane's cork model of the Temple of Vesta

Bruce Boucher, Director of Sir John Soane's Museum says: "Soane built his Museum to inspire, to be an engine for the advancement of the arts and architecture. Visitors would come and see objects from around the world that they would never have been able to see otherwise. Now, thanks to the latest technology, we can extend this ethos as never before and take the Museum out to the world. Anyone with a computer or mobile device, even thousands of miles away, can explore this magnificent building and its collection for themselves. Soane would be thrilled."



Schools worldwide are encouraged to get involved with the Soane by using the specially created online resources, allowing teachers to transport their classrooms to the London Museum.

Explore Soane is an ongoing project, with more objects to be added, dependent on fundraising. explore.soane.org

Images can be found at this link: goo.gl/OQ59uL

Press enquiries

Maxwell Blowfield, Communications Officer

+44 (0)20 7440 4240 / mblowfield@soane.org.uk

Notes to editors

About Sir John Soane's Museum

Sir John Soane's house, museum and library at No. 13 Lincoln's Inn Fields has been a public museum since the early nineteenth century. On his appointment as Professor of Architecture at the Royal Academy in 1806, Soane (1753-1837) began to arrange his books, classical antiquities, casts and models so that students of architecture might benefit from access to them. In 1833 he negotiated an Act of Parliament to preserve the house and collection after his death for the benefit of 'amateurs and students' in architecture, painting and sculpture. Today, Sir John Soane's Museum is one of the country's most unusual and significant museums with a continuing and developing commitment to education and creative inspiration.

About ScanLAB

ScanLAB Projects is an award winning creative studio which specialises in exploring the use of large scale 3D scanning in architecture and the creative industries.

ScanLAB are one of the UK's leading providers of large scale 3D scanning services, capturing precisely measured, beautifully coloured digital replicas of buildings, landscapes, objects and events. Working with clients to digitise the world, transforming

temporary events and spaces into permanent, compelling digital records, images and film.

Founded in 2010, we have worked with leading architects, broadcasters, scientists and artists from across the world.

About the Heritage Lottery Fund

Thanks to National Lottery players, we invest money to help people across the UK explore, enjoy and protect the heritage they care about - from the archaeology under our feet to the historic parks and buildings we love, from precious memories and collections to rare wildlife. www.hlf.org.uk. Follow us on [Twitter](#), [Facebook](#) and [Instagram](#) and use #HLFsupported.



With thanks to

FACTUM arte